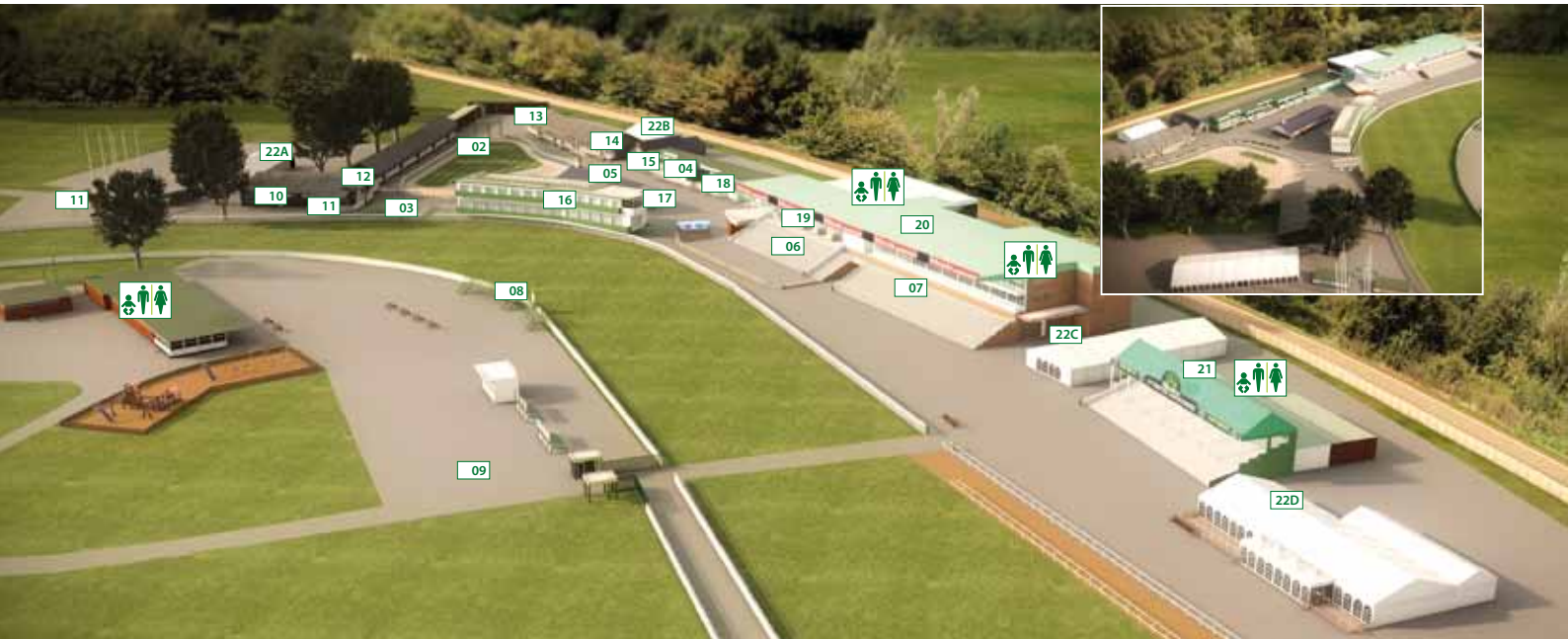


UTTOXETER

RACING & EVENTS

RACECOURSE PLAN



COURSE FEATURES

Prominent points on the course:

- 01. MAIN ENTRANCE & TURNSTILES**
- 02. PARADE RING & WINNERS ENCLOSURE**
- 03. DISABLED VIEWING AREA**
- 04. RACECOURSE OFFICE**
- 05. TOTE BETTING SHOP**
- 06. PREMIER GRANDSTAND**
- 07. BETTING HALL**
- 08. WINNING POST**
- 09. CENTRE COURSE**

HOSPITALITY FACILITIES

Your location for the day – suite or marquee:

- 10. THE MCALLISTER ROOM**
An intimate room ideal for small parties.
Capacity: between 10 & 15 guests
- 11. THE CHASE ROOM**
Overlooking the Parade Ring and Winners' Enclosure, watch the horses go down to the start from the private balcony around this popular box.
Capacity: between 20 & 30 guests
- 12. THE PADDOCK PAVILION**
Ideal for larger parties, with a private balcony overlooking the Parade Ring and Winners' Enclosure.
Capacity: between 50 & 120 guests
- 13. OWNERS & TRAINERS BAR**
- 14. PADDOCK BOXES**
 - A. The Saddles Room**
 - B. The Martingale Room**
 - C. The Cavesson Room**
 - D. The Stirrups Room**
 - E. The Hunters Room**

All with a private balcony overlooking the Parade Ring. Ideal for small parties, or can be joined together to provide a larger facility.
Capacity: between 20 & 130 guests

15. THE PADDOCK VIEW

With an elevated private balcony overlooking the Parade Ring, this box puts you and your guests at the heart of the action.
Capacity: between 12 & 20 guests

16. THE STAFFORDSHIRE STAND

At the heart of the course, these rooms give you the closest racing view in the country. Split into four private sections or joined to make one large room, the Staffordshire Stand guarantees you spectacular viewing.
Room premium £450 plus VAT per section.
Capacity: between 15 & 160 guests

17. THE PADDOCK ROOM

With an elevated private balcony overlooking the Parade Ring, this box puts you and your guests at the heart of the action.
Capacity: between 12 & 20 guests

18. HOOPS BISTRO & CHAMPAGNE BAR

19. SILKS RESTAURANT & PLATINUM SUITE

20. PRINCE EDWARD STAND

21. RAILWAY BAR & CARVERY

22. LUXURY MARQUEES

- A. Main Entrance**
- B. Paddock**
- C. Grandstand**
- D. Final Furlong**

Capacity: between 50 & 1000 guests

www.uttoxeter-racecourse.co.uk

01889 562561

UTTOXETER

RACING & EVENTS

MEETINGS & TRAINING

BECOME A CHAMPION TRAINER AT UTTOXETER RACECOURSE

We have the perfect setting for your next training course...

- All rooms have inspiring views
- Tranquil surroundings
- Plenty of free car parking
- Room capacities to suit your numbers
- Easy accessible from all major routes
- Assistance available with your heavy course work
- We can offer a simple working lunch or a full conference buffet
- Room hire rates available on request

DAY DELEGATE RATE PACKAGES FROM £24 + VAT

Room hire rates available on request.

For more information contact the Events Team on 01889 562561



www.uttoxeter-racecourse.co.uk

01889 562561

UTTOXETER

RACING & EVENTS

DAY DELEGATE PACKAGES

Uttoxeter Racecourse is a fantastic venue situated within the stunning Staffordshire countryside and is easily accessible from Derby, Stoke and the surrounding area.

Whether you choose one of our three Day Delegate packages or require bespoke alternatives, our experienced team will work with you to reach your requirements and expectations.

GOLD DAY DELEGATE RATE

£38 PER DELEGATE + VAT

- Conference room hire 8am – 6pm
- Separate dining area if required
- Use of up to 2 syndicate rooms
- Choice of hot and cold conference buffet
- Available throughout the day tea, coffee served with a selection of biscuits
- Iced water and cordials
- 1 x overhead or LCD projector & screen, flipchart & pens
- Delegate stationery
- Sweets
- Complimentary Wi-Fi
- Events Manager on hand to run the day
- Unlimited free car parking

SILVER DAY DELEGATE RATE

£31 PER DELEGATE + VAT

- Conference room hire 8.00am – 6.00pm
- Separate dining area if required
- Choice of conference buffet
- 3 servings of tea, coffee and biscuits
- Jugs of iced water
- 1 x overhead or LCD projector & screen, flipchart & pens
- Complimentary Wi-Fi
- Events Manager on hand to run the day
- Unlimited free car parking

BRONZE DAY DELEGATE RATE

£24 PER DELEGATE + VAT

- Conference room hire 8.00am – 6.00pm
- A light sandwich buffet lunch
- 2 servings of tea, coffee and biscuits
- Jugs of iced water
- 1 x overhead or LCD projector & screen, flipchart & pens
- Complimentary Wi-Fi
- Unlimited free car parking



For more information contact the Events Team on 01889 562561

UTTOXETER

RACING & EVENTS

SAMPLE DAY DELEGATE MENUS

Our award winning caterers can adapt to any dietary requirement and our Day Delegate menus give your event that finishing touch.

GOLD DAY DELEGATE MENU

Coffee and tea with chocolate and shortbread biscuits
 Iced water and cordials
 Minted lamb casserole
 Chicken in a mushroom and marsala cream sauce
 Vegetable stroganoff
 Thyme roasted baby jacket potatoes
 Long grain and wild rice
 A medley of fresh vegetables
 Classic lemon tart served with fresh dairy cream
 Selection of English cheeses and fruit
 Tea and coffee

SILVER DAY DELEGATE MENU

3 servings of coffee, tea and biscuits
 Iced water
 A selection of wraps: Mediterranean vegetable-feta, chicken salsa rocket and ham salad
 Skewered chicken with garlic mayonnaises dip
 Baby jacket potatoes baked with rosemary
 Kettle crisps
 Vanilla cheesecake and berry compote
 Tea and coffee

BRONZE DAY DELEGATE MENU

2 servings of coffee, tea and biscuits
 A selection of sandwiches
 Potato wedges and tomato dip
 Cheese and fresh fruit



For more information contact the Events Team on 01889 562561

UTTOXETER

RACING & EVENTS



FURLONGS OF FLEXIBLE SPACE FOR YOU TO FILL!

SITE HIRE & CARAVAN RALLIES

Uttoxeter Racecourse plays host to events of all kinds – from car shows to large scale concerts.

Public events can take advantage of the magnificent rolling countryside.

- Easily accessible from all major routes
- Acres of car parking on site
- Adjacent to Uttoxeter Train Station
- Grass and hard-standing areas available
- Camping facilities available
- Indoor exhibition halls, cafes and bars
- The site has a secure perimeter with gate entry points

The perfect setting to hold your unique event.

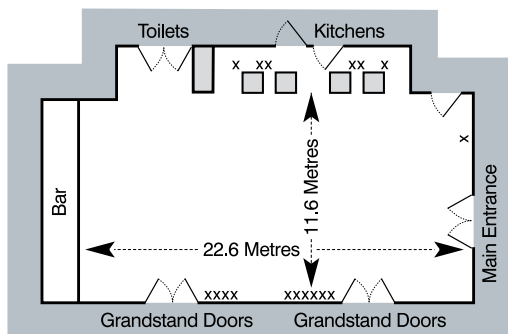
For more information contact the Events Team on 01889 562561



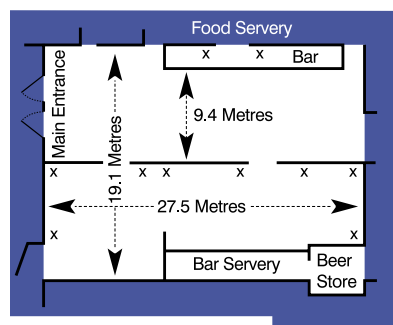
www.uttoxeter-racecourse.co.uk

01889 562561

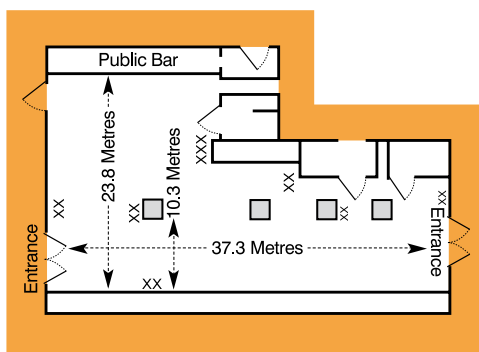
ROOM SPECIFICATIONS



1 Platinum Suite



2 Premier Bar

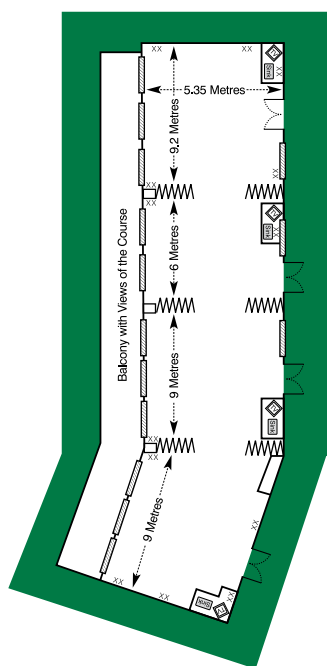


3 Exhibition Hall

X = Powerpoints

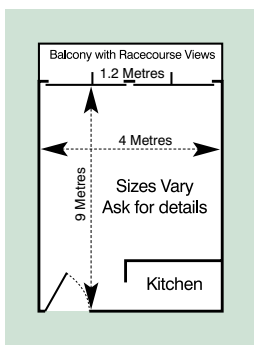
Technical Information										
Suite Name	Ceiling Mounted Projector	Windows	Electrical		Room Height (m)	Floor Type	Television/ Video/DVD	Door Height/ Width (cm)	PA System	Pillars
			No. of 13 Amp Sockets	3-Phase						
1 Platinum Suite	Yes	Yes	32	Yes	3.3	Carpet	Yes	202/160	Yes	No
2 Premier Bar	Yes	Yes	18	Yes	3.6	Tiles	No	245/200	Yes	No
3 Exhibition Hall	No	Yes	20	Yes	4.5	Tiles	No	245/200	Yes	No
4 Prince Edward Syndicate	No	Yes	6	Yes	3.3	Carpet	Yes	220/85	No	No
5 Staffordshire Stand	No	Yes	30	Yes	2.43	Carpet	Yes	198/194	No	No
6 Paddock Pavillion	Yes	Yes	12	Yes	2.73	Carpet	Yes	198/168	Yes	No

ROOM SPECIFICATIONS

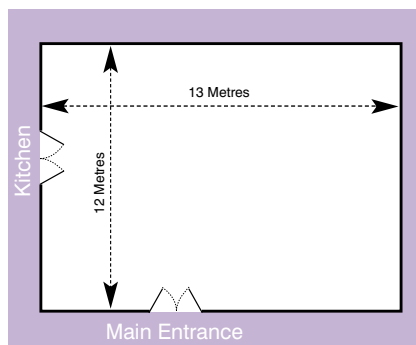


5 Staffordshire Stand

4 Prince Edward Syndicate



6 Paddock Pavillion



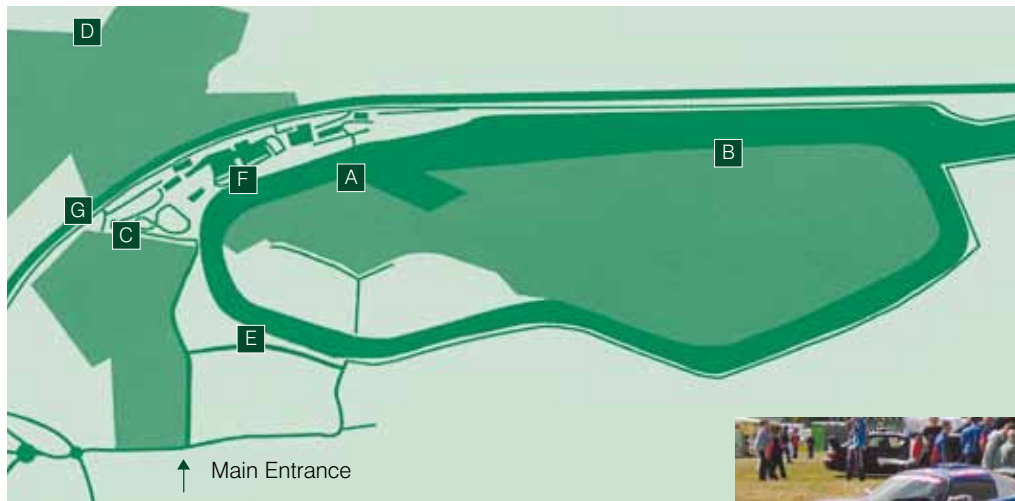
Various syndicate rooms available with outstanding racecourse views.

Seating Capacities						
Suite Name	Theatre	Board Room	Class Room	Cabaret	Banquet	Capacity m ²
1 Platinum Suite	300	20+	190	170	200	256
2 Premier Bar	320	20+	240	160	300	534
3 Exhibition Hall	600	20+	375	250+	450	709
4 Prince Edward Syndicate	20	20	N/A	N/A	30	
5 Staffordshire Stand	150	40	100	130	175	185
6 Paddock Pavillion	150	20+	40	70	120	

UTTOXETER

RACING & EVENTS

SITE SPECIFICATIONS



269,360m² of outdoor event space

Unlimited Free Parking

Secure Perimeter with turnstile and/or gate entry points

Public Address and video link systems

Public entertainment license covering all indoor and outdoor areas

- A** Centre Course - Level grass area and hardstanding
- B** Centre Course - Vast grass terrain
- C** Event Car Parks
- D** Large, level grass area
- E** Stabling - for up to 100 horses and hardstanding
- F** Conference Centre and Grandstand
- G** Uttoxeter Railway Station



UTTOXETER

RACING & EVENTS

2011 FIXTURE LIST

Date	Event	First Race	Last Race
Sat 29 Jan	Burn's Celebration	1.20pm	4.10pm
Sat 19 Feb	Hog Roast Saturday	1.55pm	5.05pm
Sat 19 Mar	Midlands Grand National	2.05pm	5.25pm
Sat 2 Apr	Music for Mother's	2.00pm	5.00pm
Sat 30 Apr	Family Fun Day	1.45pm	5.05pm
Sun 8 May	Staffordshire Day	2.00pm	5.00pm
Sat 14 May (eve)	James Bond Night	6.00pm	8.40pm
Sun 29 May	Family Fun Day	2.10pm	5.35pm
Thurs 2 June (eve)	Uttoxeter Proms	5.50pm	9.05pm
Thurs 9 June (eve)	Ladies Night	6.40pm	9.10pm
Sun 26 June	Britannia Summer National	2.15pm	5.35pm
Tues 5 July (eve)	Uttoxeter Nights	6.30pm	9.00pm
Weds 13 July	British Heart Foundation	2.10pm	4.40pm
Thurs 21 July	Senior Citizens Day	2.00pm	4.50pm
Mon 25 July (eve)	Uttoxeter Nights	6.20pm	8.50pm
Wed 7 Sept	Emergency Services Day	2.20pm	5.10pm
Sun 18 Sept	Family Fun Day	2.20pm	4.50pm
Sun 2 Oct	Armed Forces Day	2.30pm	5.30pm
Thurs 13 Oct	Gentleman's Day	2.00pm	5.15pm
Fri 28 Oct	Breast Care Raceday	1.05pm	4.25pm
Sat 12 Nov	Beer Festival	12.30pm	3.55pm
Thurs 24 Nov	Christmas Market	12.45pm	3.35pm
Weds 30 Nov	Construction Raceday	12.45pm	3.35pm
Fri 16 Dec	Christmas Party Racing	12.05pm	3.30pm
Sat 31 Dec	New Years Eve	12.40pm	3.40pm

(eve) - Evening Meeting. Shaded areas are feature racedays. Gates open approximately 2 hours prior to first race. Race meetings usually consist of 6 or 7 races with half hour intervals between. All themes are subject to change. Please check race times with the racecourse and local press as times can occasionally be subject to change.

UTTOXETER

RACING & EVENTS

HOW TO FIND US

By Road

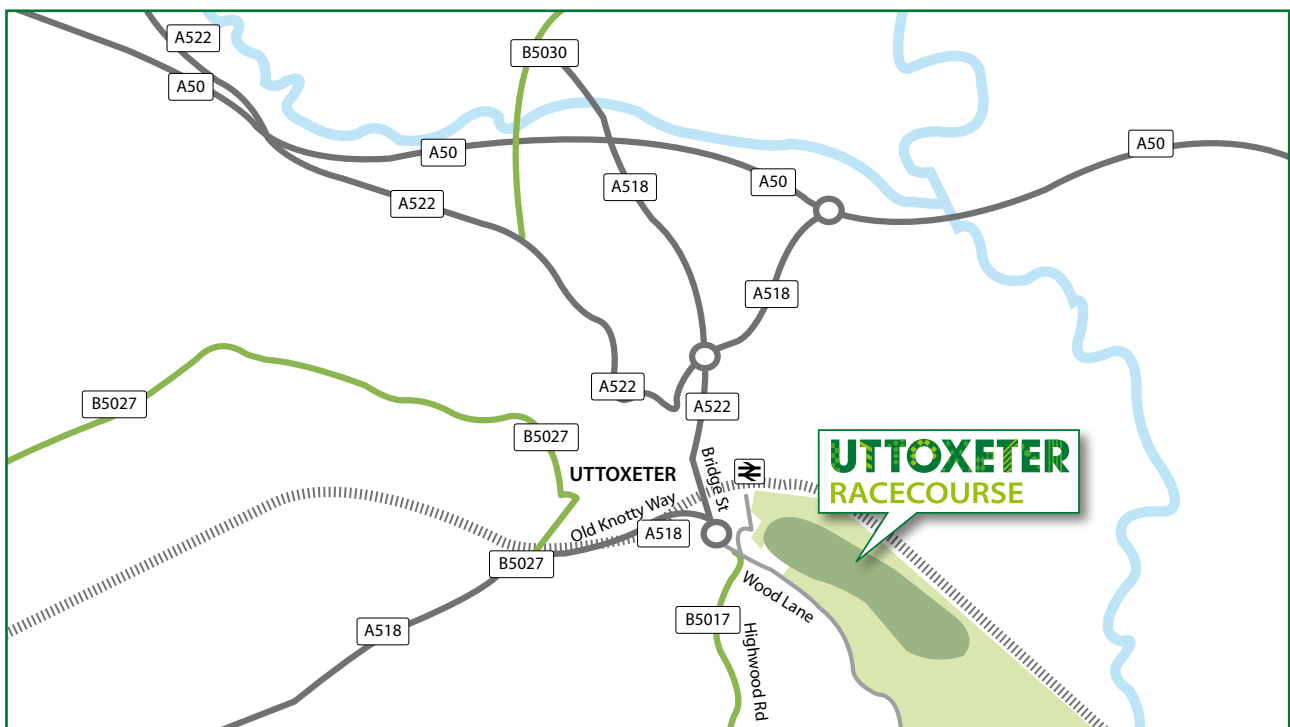
Situated just off the A50 between Derby and Stoke on Trent the racecourse is clearly signposted from the A50, A515, A518 and Uttoxeter town centre.

By Rail

Uttoxeter Railway Station is adjacent to the racecourse. Most Intercity services run to Derby and Stoke on Trent which in turn run regular connecting trains to Uttoxeter.

By Air

Helicopters may land on the centre course (by prior arrangement with the racecourse). Aircraft may use Tatenhill Airfield at Needwood, 7 miles from the racecourse. Please contact Tatenhill Aviation on 01283 575283.



Based upon Ordnance Survey Maps. © Crown Copyright.
All rights reserved. Ref 101164/2176

www.uttoxeter-racecourse.co.uk

01889 562561